

# Lincoln County EDC Newsletter

## Inside this issue:

Hotel Almira	2
Lake Roosevelt Boom	3
Assessor Enlightens	3
What is the LCEDC?	4

## What has the EDC been doing in 2007?

The EDC staff is dedicated to the recruitment of new businesses and expansion of existing businesses in Lincoln County. The EDC is involved in the following projects as facilitator, funding and implementation assistant.

### New EDC Website

Karen Robertson of Robertson Arts & More has created a new website for the EDC. It is a work in progress and if you have any suggestions for improvement please let us know! Check it out at [www.lincolnedc.org](http://www.lincolnedc.org)

### Odessa PDA

The Odessa Public Development Authority (OPDA) is administering a \$4.38 million loan from the Washington Department of Agriculture to build and equip an oil-seed crusher and a biodiesel refinery that is being leased to Inland Empire Oilseeds (IEO). The facility is designed to ultimately crush 35,000 tons of canola seed and produce 8 million gallons of biodiesel per year. This project

will create 20 jobs and provide the opportunity for numerous secondary businesses. The project has picked up momentum over the past 5 months since Green Star Products, Inc. (GSP) delivered its bio-reaction equipment and sent Brooks Agnew and Robin Lamb to Odessa to implement its installation. April 2008 is the anticipated biodiesel production date!

### N.W. Lincoln Cty. Regional PDA

The NWLCRPDA and Columbia BioEnergy were able to rectify their differences and settle problems that had arisen with the Washington CERB program. The NWLCRPDA applied for a grant to build a rail spur to serve Columbia BioEnergy.

The NWLCRPDA intends to build a contractor's plaza once its feasibility study is finished.

**Workforce training** has become a high priority for the EDC. See *Lake Roosevelt* article for more

### Reardan Area PDA

The RAPDA has completed a new road and installed utilities for its future sustainable small business incubator.

### Sprague PDA

The SPDA, in partnership with the City of Sprague, will be developing property along the I-90 corridor for future industrial/commercial development.

### Harrington PDA

The Harrington PDA will be hosting the next EDC Membership event on Thursday, March 20 at 6:00 p.m., that will focus on Lincoln County artists. More to come later!

### L.C. OHV Committee

This new committee is coordinating information in the hopes of creating a L.C. OHV ordinance.

### Classes

The EDC has arranged for classes in marketing, e-bay & Quickbooks. 2008 promises more class opportunities!



EDC Board & Staff: Top Left to right: Dale Swant, Rob Coffman, Rex Harder, Doug Plinski, Scott Hutsell, Joyce Mings, Billie Herron, Pam Kelley, Lynn McWhorter

## Lincoln County Economic Development Fund Awards

The Board of County Commissioners and the EDC partner on administering the Lincoln County Economic Development Fund. (LCEDF). This County fund comes from a Washington State economic development incentive that returns .09% of the state sales tax collected to designated rural counties to fund

projects that are of economic value to the community. The following projects were awarded grants:

1. **Reardan Area PDA:** Small Business Incubator: \$20,000
2. **City of Sprague:** Water & Sewer Extension: \$20,000
3. **Harrington Opera House Society:** Completion of lobby: \$12,160

4. **Wheatland Little League:** Complete little league fields in Davenport: \$5,000
5. **City of Davenport:** Airport Operations Building: \$10,000

Applications for next year's program will be made available in October 2008. Please call the EDC for more info.

Lincoln County EDC Members

Government Entities

- Lincoln County
- Town of Almira
- Town of Creston
- City of Davenport
- City of Harrington
- Town of Odessa
- City of Sprague
- Town of Reardan
- Town of Wilbur

Historic preservation is a vital economic tool...

Lincoln County EDC Members Chambers of Commerce PDA's

- Davenport Chamber
- Odessa Chamber
- Reardan Chamber
- Wilbur Chamber

- Odessa PDA
- Reardan Area PDA

# Hotel Almira - Restored!



Todd Starkenburg was on vacation from the busy West side of Washington, when the vacant Hotel Almira building caught his eye. A dusty, fallen 'for sale' sign revealing only a phone number led him to where he is today.

Initially, Todd, who is a contractor, was going to use the building as a source of salvage material. But with every strike of the hammer he realized that the building was too sound and too historically important to destroy. The community of Almira embraced him and he has been hooked ever since.

The building, built in 1917, is listed on the National and State Registers of Historic Places. With 50 rooms, three floors and a basement, the building was advertised as the finest hotel on the Sunset Highway. Between 1933 and 1938 it was used

as the headquarters for the Bureau of Reclamation as its engineers planned for the construction of Grand Coulee Dam.

Todd has restored the main floor and created the Moonshine Flats Bar and Grill which is open Wednesday to Sunday 11:30 a.m. to 9:00

large banquets and events (509)-639-2477.

The third floor has been beautifully transformed into a Bed & Breakfast unparalleled in our region.

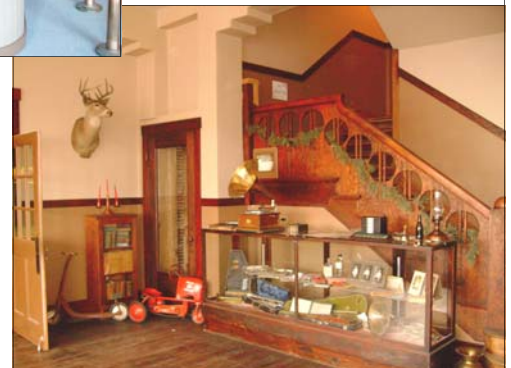
Adding to the mystique of the Hotel, Todd is convinced that he has some long-standing, non-paying guests who were investigated by the Paranormal Researchers of Spokane. One encouraging result was that the dining room, bar and café are inhabited by happy and congenial spirits. Further results from the investigation can be found at <http://prospokane.com/almira.html>



Todd Starkenburg - Owner, manager, contractor and (sometimes) the chef!

p.m. serving a varied gourmet menu ranging from fish, burgers and mouth-watering steaks. Todd welcomes

We are all grateful to Todd for his devotion to the restoration of this historic gem and to bringing a new B&B, restaurant and bar to the region!



**Lincoln Cty EDC Members**

*Businesses*

- Almira Farmers Warehouse
- Avista Utilities
- Brock, Carpenter, McGuire & DeWulf
- Columbia BioEnergy
- Harrington Opera House
- Harrington Truck & Auto
- J & E Schaffer Farms, Inc.
- Leffel, Otis & Warwick
- Odessa Union Warehouse
- Reardan Grain Growers
- Reardan Seed Company
- Scott's Tire Service
- Seed-Rite, Inc.

**EDC Board Tours Lake Roosevelt**

In August, 2007 the EDC Board members accompanied by the Lincoln County Planner, Jim DeGraffenried, toured areas of new development and land speculation on the south-east section of Lake Roosevelt.

It became clear to everyone on the tour that Lake Roosevelt has been discovered! Lake Coeur d'Alene and Lake Chelan are reaching maximum capacity and land prices at those two lakes are high which is causing people to turn their attention towards Lake Roosevelt.



velt.

According to Jim DeGraffenried the building and land subdivision boom has begun.

- Over the past 3 years the number of building permits issued by the County has risen by 30% per year.
- Land and building valuations are rising exponentially.
- Property subdivisions have sky-rocketed. In 2007 there were 250 subdivision lots approved in Lincoln County along with 50 short plats which are mostly located in the Lake Roosevelt area.

This new activity at Lake Roosevelt has uncovered that fact that Lincoln County has a serious shortage of skilled workers.

Looking ahead three to five years when the new lot owners will be in the construction phase of their retirement and summer homes, we want to make certain that our Lincoln County workforce is trained and ready to fill the jobs that this boom will create.

The EDC Board and the N.W. Lincoln County Regional PDA are working together on a project that will focus on workforce development to meet these future challenges.

The NWLCRPDA received a \$20,000 grant from the Washington State Rural Opportunity Fund to develop a plan for a *contractor's plaza*, which will offer contractors office space and a place to store equipment. The plaza will be a good recruiting tool and will offer local start-up contractors an opportunity to take root. The grant also tasks the PDA to draft the framework for countywide workforce training.

In partnership with the Lincoln County School Districts, the Spokane Community Colleges, the Spokane Skills Center, Big Bend Community College and the Workforce Development Council the goal is to provide technical instruction and apprenticeship opportunity to all ages of Lincoln County's population.

The EDC is heading-up the workforce training effort and is looking for people in Lincoln County who would like to participate in this exciting project. Please call or email Pam Kelley if you are interested! (509-725-1170)



Hawk Creek Estates Club-house under construction

**County Assessor Educates EDC Board!**

The EDC Board invited Frosty Freeze, the Lincoln County Assessor, to its September meeting, to offer the directors a clarification of the equation between land valuation/development and the County budget. The following interesting facts helped answer lingering questions:

- Washington State law mandates that the County may only levy taxes up to \$1.80 per \$1,000 of valuation.
- All Washington taxing districts are restricted by law to receive only 1% more than they received the previous year.
- New development has minimal effect on local government budgets. For example: There was \$14 million of construction built in Lincoln County in 2006 which only equated to an additional \$25,000 of county taxes collected.



- *Lake Roosevelt is the jewel of Lincoln County*

**Lincoln County EDC Members**

*Individual Memberships*

- Wesley & Julia Hill
- Doug & Nancy Plinski
- Steve & Linda Powell
- Gordon & Billie Herron

## Lincoln County Economic Development Council

### LINCOLN COUNTY ECONOMIC DEVELOPMENT COUNCIL

P.O. Box 1305  
Davenport, WA. 99122

Phone: 509-775-1170  
Fax: 509-775-1172  
pkelley@co.lincoln.wa.us  
jmings@co.lincoln.wa.us  
www.lincolnedc.org

#### Lincoln County EDC Board

Dale Swant, President  
Scott Hutsell, V. President  
Rex Harder, Treasurer  
Lauri Long, Secretary  
Billie Herron, Director  
Lynn McWhorter, Director  
Gary Green, Director  
Mike Evans, Director  
Doug Plinski, Director  
Frank Nonemacher, Dir.  
Rob Coffman, Director

#### Staff

Pam Kelley, Ex. Director  
Joyce Mings, Admin. Asst.

#### What is the Lincoln County EDC?

The Lincoln County EDC is a member supported non-profit organization dedicated to business recruitment. The EDC is overseen by an eleven-member Board of Directors. It opened its doors on July 1, 2006 with Pam Kelley, Executive Director and Joyce Mings, Administrative Assistant. The office is located at 303 6th Street in Davenport in the Lincoln County Courthouse annex shared with WSU Extension.

The EDC has a diverse set of goals to include the following:

- Business assistance & training
- Project planning & development
- Grant writing
- Member in statewide economic development organizations
- Assist local PDA's to attract new businesses
- Assist in funding infrastructure improvement
- Foster an economic development network within Lincoln County

The EDC depends heavily on membership support in order to function at a competitive level.

The EDC Board is grateful to those businesses who have already stepped forward with generous membership contributions. If you are interested in becoming a member please call Pam or Joyce at 509-725-1170

Lincoln County EDC  
P.O. Box 1305  
303 6th Avenue  
Davenport, WA. 99122

